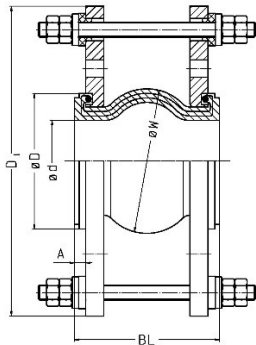


## Rubber expansion joint with lap joint flanges



### BOA Flex

### Type 384-TR-A-EPDM



Tied rubber expansion joint with lap joint flanges and sound insulated external restraints. Suitable for lateral movement or vibration damping

#### Materials:

Bellows: Inner / Outer layer EPDM  
 Cord layers: Nylon  
 Flanges: Carbon steel, galvanised  
 Restraints: Carbon steel, galvanised (with rubber damping washers)

#### Allowable working conditions:

Working pressure: 16 bar  
 Vacuum Pa 0,9 bar  
 Temperature -10°C to 100°C  
 Test pressure 1,5 times working pressure

**Bellows color marking: Red Bellows: EPDM**

#### Pressure reduction:

Up to 30 °C : 100 % PN  
 From 30 °C to 60 °C: max. 10 bar  
 From 60 °C to 100 °C: max. 4,1 bar

DN	Flange PN	Overall length	Nominal Movement			A	Ø W	Ø d +/- 5 mm	Ø D +/- 1 mm	D1 +/- 1 mm	Article-Nr.	Weight
				Lateral + / -								
		[mm]		[mm]		[mm]	[mm]	[mm]	[mm]	[mm]	EPDM	[kg]
32	10/16	130		12		6	67	32	70	220	J384E03216	4,74
40	10/16	130		12		6,5	77	40	80	230	J384E04016	5,48
50	10/16	130		12		5,5	86	50	90	245	J384E05016	7,72
65	10/16	130		12		5,5	104	65	108	296	J384E06516	9,34
80	10/16	130		12		5,5	119	80	124	310	J384E08016	10,76
100	10/16	130		12		7,5	140	100	146	330	J384E10016	11,40
125	10/16	130		12		7,5	168	125	180	360	J384E12516	14,16
150	10/16	130		12		8	196	150	209	396	J384E15016	17,32
200	16	130		12		9	256	200	259	468	J384E20016	24,90
250	16	130		12		9	306	250	322	534	J384E25016	35,26
300	16	130		12		9,5	398	300	371	580	J384E30016	40,58

**Important:** Type 384-TR-A-EPDM restraints are supplied loose in the box for on-site mounting as per enclosed mounting instructions.

Changes to dimensions and construction are reserved.  
 Larger diameters on request